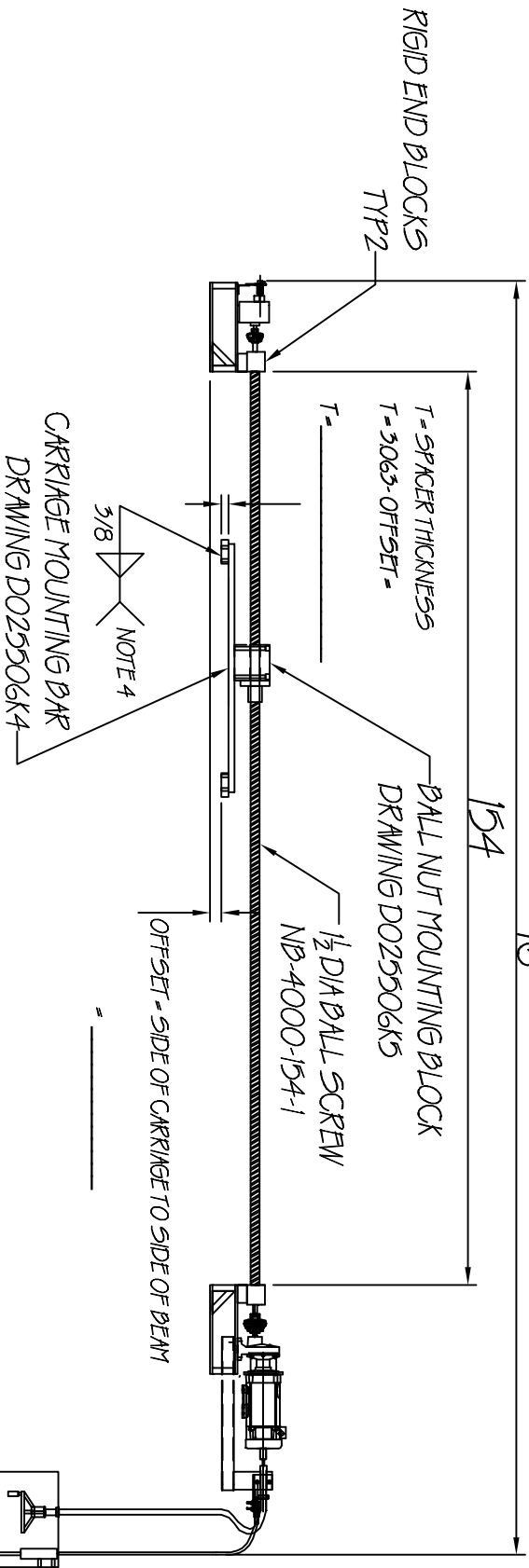


Tolerances	Decimal	Fractional $\pm 1/32$	Angular $\pm 1'$
------------	---------	-----------------------	------------------

214 $\frac{11}{16}$

154



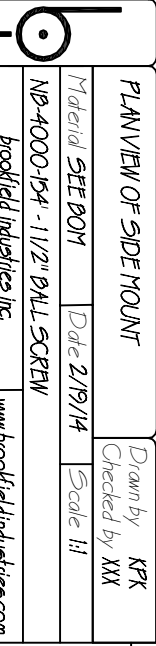
BALL SCREW ALIGNMENT:

- 1) BALL SCREW CENTERLINE MUST BE PARALLEL WITH LINEAR BEARING CENTERLINE WITHIN 1/8" FROM END BLOCK TO END BLOCK IN BOTH VERTICAL AND HORIZONTAL PLANES
- 2) CARRIAGE MOUNTING BAR MUST BE PARALLEL WITH BALL SCREW CENTERLINE WITHIN 1/16"
- 3) ANY DEVIATIONS FROM THESE TOLERANCES MUST BE SHIMMED ACCORDINGLY TO PREVENT PREMATURE FAILURE.
- 4) SIDE MOUNT SPACER SEE DRAWING D025506K9 TYP 2

PLAN VIEW OF SIDE MOUNT
 NB-4000-154"
 PEAK HORIZONTAL FORCE = 1400 LBS

MODIFICATIONS INCLUDE:
 1 1/2 X 100 X 166,182" BALL SCREW
 1HP DC 1750RPM MOTOR
 8:1 IN LINE REDUCER
 KB HEAT SINK UPGRADE
 TRAVEL DISTANCE = 90.5"

Rev.	Revision note	Date	Drawn	Check



PLAN VIEW OF SIDE MOUNT

Material SEE BOM	Date 2/19/14	Drawn by KFK
NB-4000-154" - 1 1/2" BALL SCREW	Checked by XXX	Scale 1:1

brookfield industries inc.
 99 West Hillside Ave. : Thomaston, CT
 P: (860) 283-6211 F: (860) 283-6123
 info@brookfieldindustries.com
 www.brookfieldindustries.com
 Drawing No: F1e New
 NB-4000-154-511