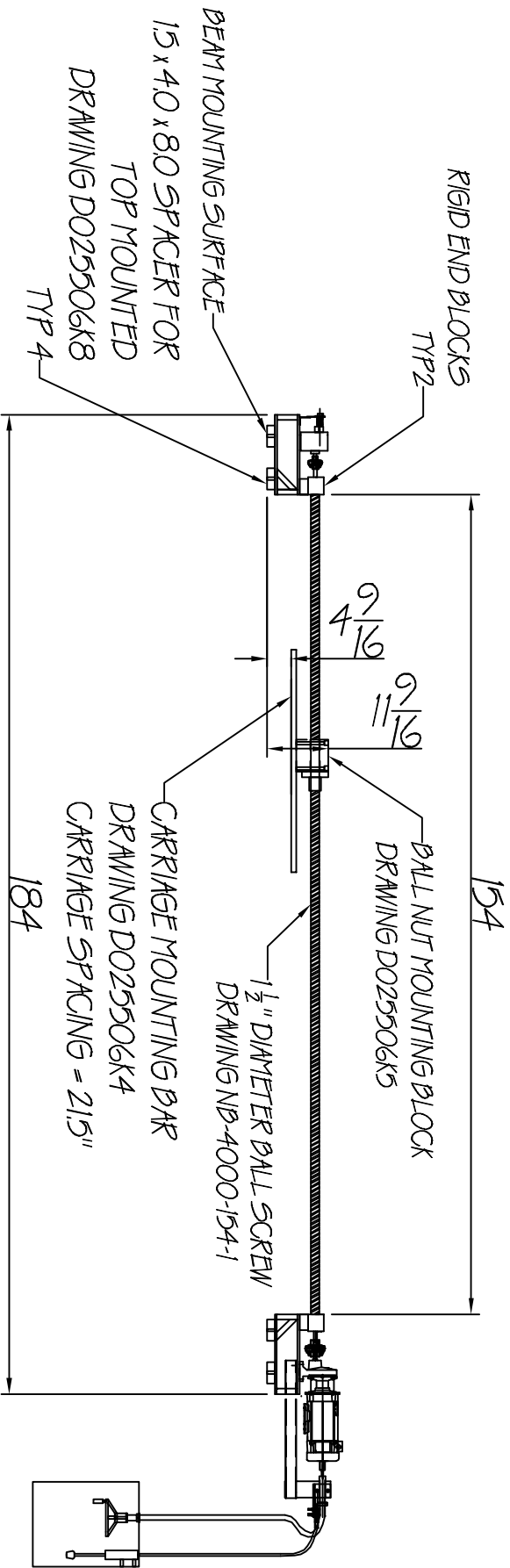



Tolerances	Decimal	Fractional $\pm 1/32$	Angular $\pm 1'$	Rev.	Revision note	Date	Drawn	Check



**BALL SCREW ALIGNMENT:**  
 1) BALL SCREW CENTERLINE MUST BE PARALLEL WITH LINEAR BEARING CENTERLINE WITHIN 1/8" FROM END BLOCK TO END BLOCK IN BOTH VERTICAL AND HORIZONTAL PLANES  
 2) CARRIAGE MOUNTING BAR MUST BE PARALLEL WITH BALL SCREW CENTERLINE WITHIN 1/16"  
 3) ANY DEVIATIONS FROM THESE TOLERANCES MUST BE SHIMMED ACCORDINGLY TO PREVENT PREMATURE FAILURE.

**PEAK HORIZONTAL FORCE = 1400 LBS**

**MODIFICATIONS INCLUDE:**  
 1 1/2 X 100 X 166.182" BALL SCREW  
 1HP DC 1750RPM MOTOR  
 8:1 IN LINE REDUCER  
 KB HEAT SINK UPGRADE  
 TRAVEL DISTANCE = 90.5"

	
ELEVATION OF TOP MOUNT	
Material SEE BOM	Date 2/19/14
NB-4000-154 - 1 1/2" BALL SCREW	
brookfield industries inc.	
99 West Hillside Ave. : Thomaston, CT	
P: (860) 285-6211 F: (860) 283-6123	
info@brookfieldindustries.com	
www.brookfieldindustries.com	Drawn/No/Flt/Rev
	NB-4000-154-TM