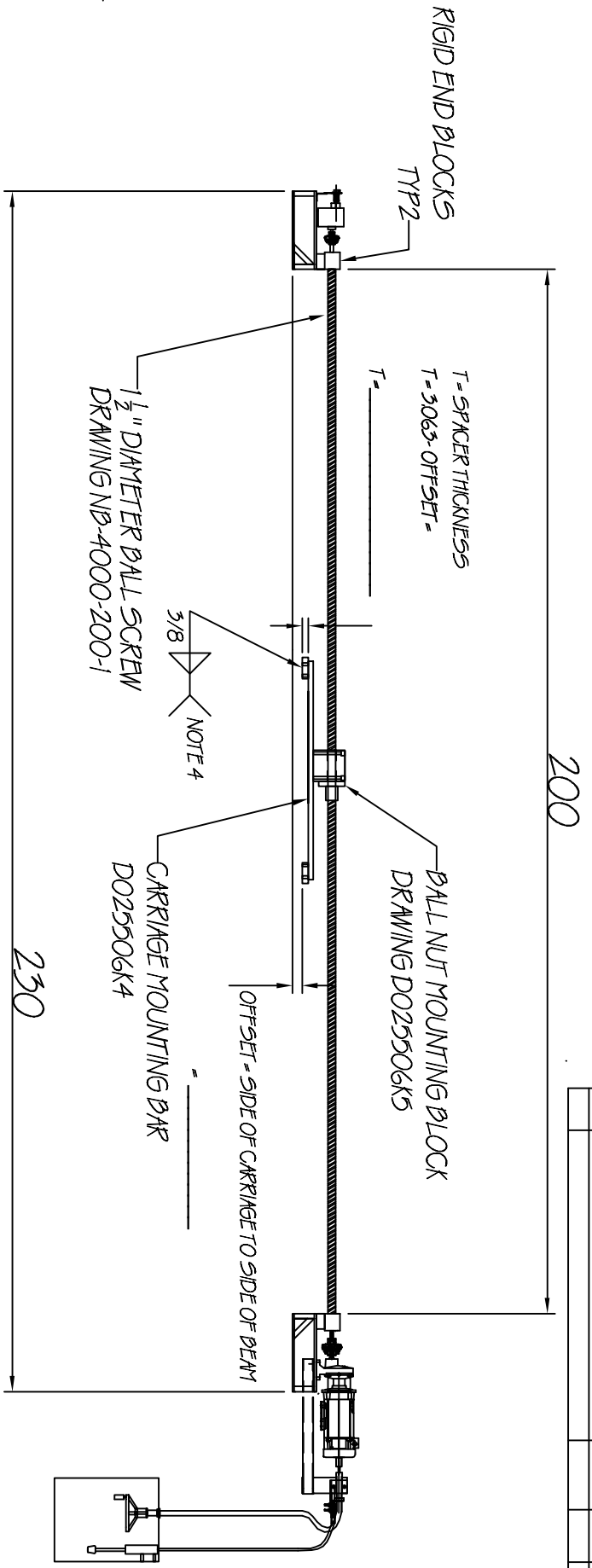



Tolerances	Decimal	Fractional $\pm 1/32$	Angular $\pm 1/32$	Rev.	Revision note	Date	Sign	Check



- BALL SCREW ALIGNMENT:**
- 1) BALL SCREW CENTERLINE MUST BE PARALLEL WITH LINEAR BEARING CENTERLINE WITHIN 1/8" FROM END BLOCK TO END BLOCK IN BOTH VERTICAL AND HORIZONTAL PLANES
 - 2) CARRIAGE MOUNTING BAR MUST BE PARALLEL WITH BALL SCREW CENTERLINE WITHIN 1/16"
 - 3) ANY DEVIATIONS FROM THESE TOLERANCES MUST BE SHIMMED ACCORDINGLY TO PREVENT PREMATURE FAILURE.
 - 4) SIDE MOUNT SPACER SEE DRAWING D025506K9

- MODIFICATIONS INCLUDE:**
- 1 1/2 X 100 X 212" BALL SCREW
 - 1HP DC 1750RPM MOTOR
 - 8:1 IN LINE REDUCER
 - K9 HEAT SINK UPGRADE
 - PEAK HORIZONTAL FORCE = 1400 LBS

	
PLAN VIEW OF SIDE MOUNT	
Material SEE BOM	Date 4/14/14
NB-4000-200" - 1 1/2" BALL SCREW	
brookfield industries inc.	
99 West Hillside Ave. : Thomaston, CT	
P: (860) 283-6211 F: (860) 283-6123	
info@brookfieldindustries.com	
www.brookfieldindustries.com	Drawing No: FIC-NM
NB-4000-200-5M	