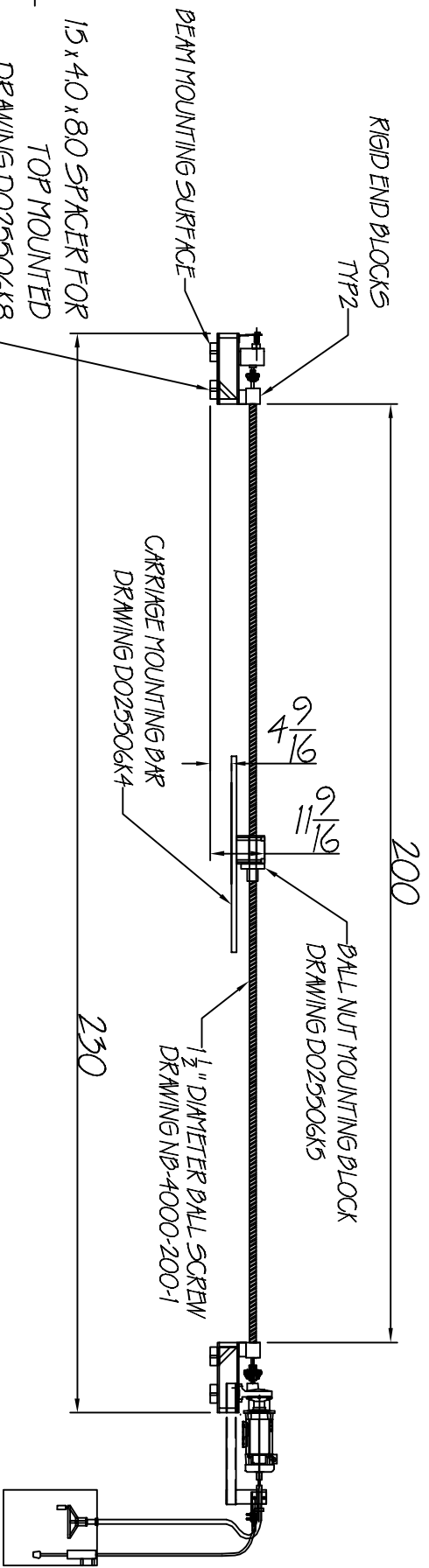


Tolerances	Decimal	Fractional $\pm 1/32$	Angular $\pm 1'$

Rev.	Revision note	Date	Engn	Check
1	REVISED TO INCLUDE 10/2/10 KFK			



**BALL SCREW ALIGNMENT:**

- 1) BALL SCREW CENTERLINE MUST BE PARALLEL WITH LINEAR BEARING CENTERLINE WITHIN 1/8" FROM END BLOCK TO END BLOCK IN BOTH VERTICAL AND HORIZONTAL PLANES
- 2) CARRIAGE MOUNTING BAR MUST BE PARALLEL WITH BALL SCREW CENTERLINE WITHIN 1/16"
- 3) ANY DEVIATIONS FROM THESE TOLERANCES MUST BE SHIMMED ACCORDINGLY TO PREVENT PREMATURE FAILURE.

**MODIFICATIONS INCLUDE:**

- 1 1/2 X 100 X 2 1/2" BALL SCREW
- 1 HP DC 1750RPM MOTOR
- 8 1/2 IN LINE REDUCER
- K8 HEAT SINK UP GRADE
- PEAK HORIZONTAL FORCE = 1400 LBS

ELEVATION OF TOP MOUNT		Drawn by KFK	
Material SEE BOM		Checked by XXX	
Date 9/5/07		Scale 1:1	
NB-4000-200"-1 1/2" BALL SCREW			
brookfield industries inc.		www.brookfieldindustries.com	
99 West Hillside Ave. : Thomaston, CT		Drawing No./File Name	
P: (860) 285-6211 F: (860) 283-6123		NB-4000-200-1T1	
info@brookfieldindustries.com			